

WR

Series Right-angle Gearbox
系列转角减速机

PRODUCT FEATURES

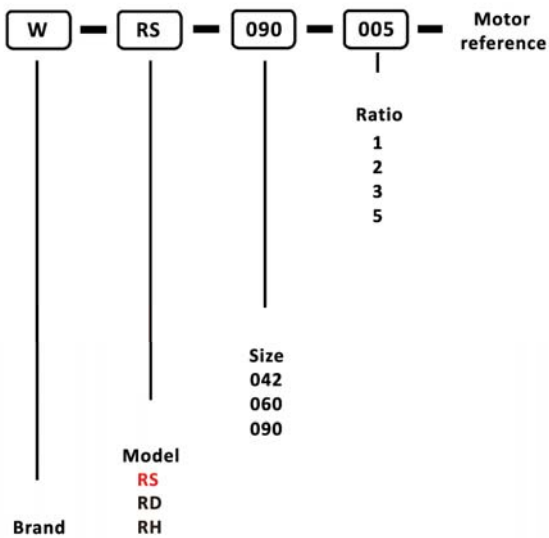
- » WR series adopts worm bevel gear design.
- » The backlash can adjust according customers' requirements.
- » Lower noise.
- » The delicate shell design can be matched with any direction.
- » Easy installation,can multi-match each motor or gearbox.
- » Multiple output(hollow output,solid output or dial output).
- » Multiple output,maintance-free.



INDICATION FOR MODEL

SELECTION

GENERAL NOTICES



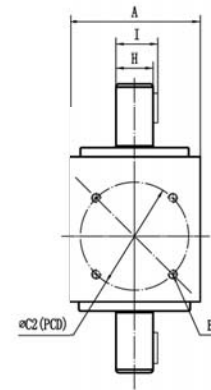
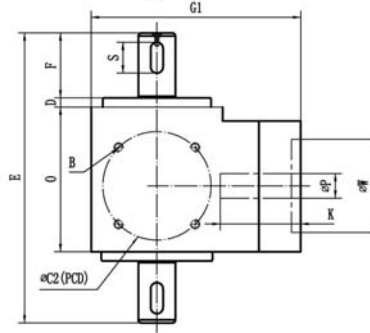
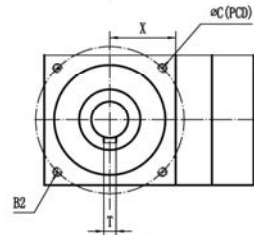
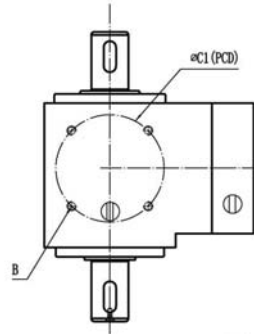
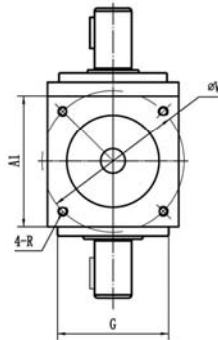
- Type, model and torque
- Ratio or output speed
- Working conditions and connection methods
- Quantity and installed machine name
- Input mode and input speed
- Motor brand model or flange and motor shaft size

PERFORMANCE DATA OF SPEED REDUCER

● Performance

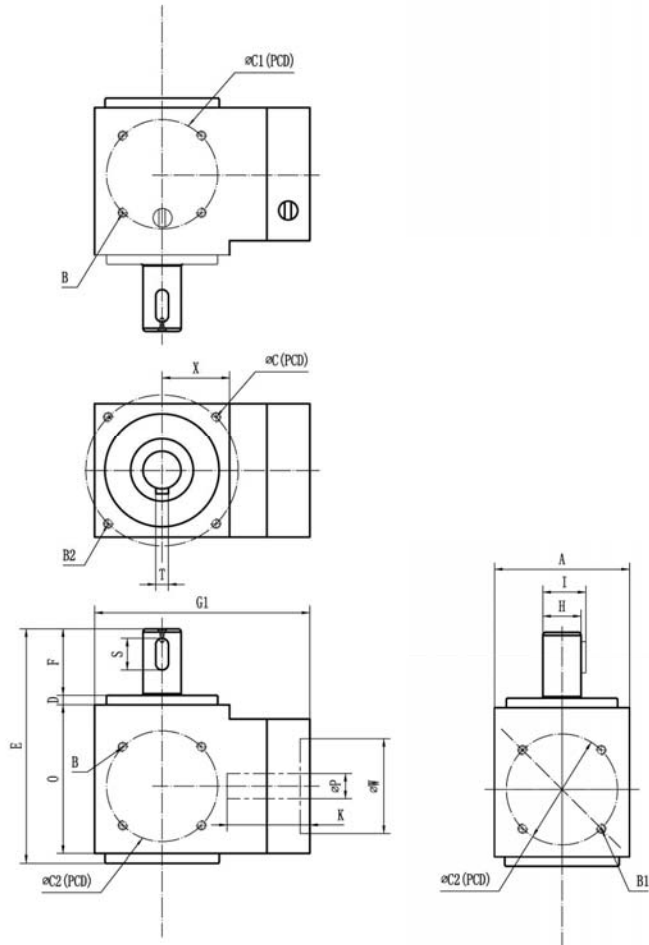
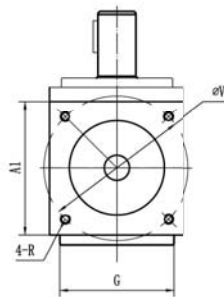
| Model | WRS/WRH/WRD042 | WRS/WRH/WRD060 | WRS/WRH/WRD090 |
|------------------------|---|----------------------------|---------------------------|
| Frame size | □42 | □60 | □90 |
| Rated output torque | 15N.m | 30N.m | 60N.m |
| Maximum output torque | 2 times rated output torque | | |
| Rated input speed | 1500rpm | 1000rpm | |
| Maximum input speed | 2000rpm | | |
| Reduction ratio | 2、3 | 1、2、3、5 | |
| Backlash | 'Adjustable backlash (P1=6 arc min ;P2=9 arc min) | | |
| Allowable radial load | 300N | 500N | 1200N |
| Allowable axial load | 150N | 200N | 500N. |
| Input shaft size | ≤11 / ≤12 (mm) | 14 / ≤16 (mm) | ≤19 / ≤24 (mm) |
| Rotational Inertia | 0.02kg · [cm] ² | 0.06kg · [cm] ² | 0.4kg · [cm] ² |
| Torsional rigidity | 1.2Nm/arc min | 1.5Nm/arc min | 5Nm/arc min |
| Rated lifespan | 10000h (Condition under rated load and rated input speed) | | |
| Efficiency | 95% | | |
| Working Temperature | - 10℃ ~ 80℃ | | |
| Rotation direction | Opposite with the input shaft | | |
| Protection Level | IP65 | | |
| Lubricating method | Grease Lubrication | | |
| Installation direction | In any direction | | |
| Noise Level | ≤62dB(A) | ≤65dB(A) | ≤65dB(A) |
| Weight | 0.7Kg | 1.3Kg | 4.1Kg |

WRD



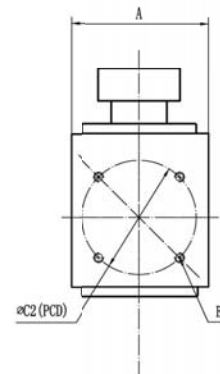
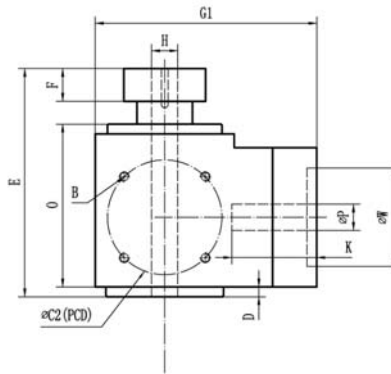
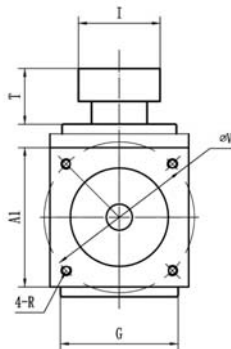
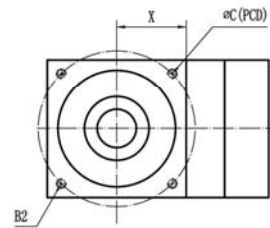
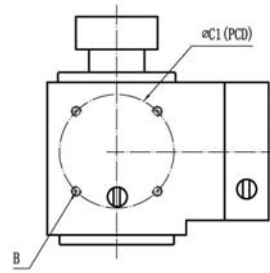
| Size | WRD04202/03 | WRD06001/02/03/05 | WRD09001/02/03/05 |
|------|--------------|-------------------|-------------------|
| A | 42.5 | 60 | 90 |
| A1 | 42.5 | 60 | 90 |
| B | 4-M3 /Depth4 | 4-M4 /Depth5 | 4-M5 /Depth8 |
| B1 | 4-M3 /Depth4 | 4-M4 /Depth5 | 4-M5 /Depth8 |
| B2 | 4-M3 /Depth6 | 4-M5 /Depth10 | 4-M6 /Depth12 |
| C | 48 | 70 | 100 |
| C1 | 42 | 46 | 70 |
| C2 | 35 | 36 | 60 |
| D | 3 | 3 | 3 |
| E | 94 | 125 | 170 |
| F | 21 | 27 | 35 |
| G | 36 | 52 | 80 |
| G1 | 68 | 98 | 129 |
| H | 12 | 14 | 19 |
| I | 13.5 | 16 | 21.8 |
| K | 26 | 34 | 41 |
| O | 47 | 64 | 93.5 |
| S | 10 | 16 | 25 |
| T | 4 | 5 | 6 |
| X | 21.25 | 30 | 45 |

WRS



| Size | WRS04202/03 | WRS06001/02/03/05 | WRS09001/02/03/05 |
|------|--------------|-------------------|-------------------|
| A | 42.5 | 60 | 90 |
| A1 | 42.5 | 60 | 90 |
| B | 4-M3 /Depth4 | 4-M4 /Depth5 | 4-M5 /Depth8 |
| B1 | 4-M3 /Depth4 | 4-M4 /Depth5 | 4-M5 /Depth8 |
| B2 | 4-M3 /Depth6 | 4-M5 /Depth10 | 4-M6 /Depth12 |
| C | 48 | 70 | 100 |
| C1 | 42 | 46 | 70 |
| C2 | 35 | 36 | 60 |
| D | 3 | 3 | 3 |
| E | 74 | 97 | 136.5 |
| F | 21 | 27 | 35 |
| G | 36 | 52 | 80 |
| G1 | 68 | 98 | 129 |
| H | 12 | 14 | 19 |
| I | 13.5 | 16 | 21.8 |
| K | 26 | 34 | 41 |
| O | 47 | 64 | 93.5 |
| S | 10 | 16 | 25 |
| T | 4 | 5 | 6 |
| X | 21.25 | 30 | 45 |

WRH



| Size | WRH04202/03 | WRH06001/02/03/05 | WRH09001/02/03/05 |
|------|--------------|-------------------|-------------------|
| A | 42.5 | 60 | 90 |
| A1 | 42.5 | 60 | 90 |
| B | 4-M3 /Depth4 | 4-M4 /Depth5 | 4-M5 /Depth8 |
| B1 | 4-M3 /Depth4 | 4-M4 /Depth5 | 4-M5 /Depth8 |
| B2 | 4-M3 /Depth6 | 4-M5 /Depth10 | 4-M6 /Depth12 |
| C | 48 | 70 | 100 |
| C1 | 42 | 46 | 70 |
| C2 | 35 | 36 | 60 |
| D | 3 | 3 | 3 |
| E | 65.5 | 88 | 125 |
| F | 8 | 10 | 16 |
| G | 36 | 52 | 80 |
| G1 | 68 | 98 | 129 |
| H | 8 | 14 | 20 |
| I | 25 | 34 | 54 |
| K | 26 | 34 | 50 |
| O | 47 | 64 | 93.5 |
| T | 12.5 | 18 | 25 |
| X | 21.25 | 30 | 45 |